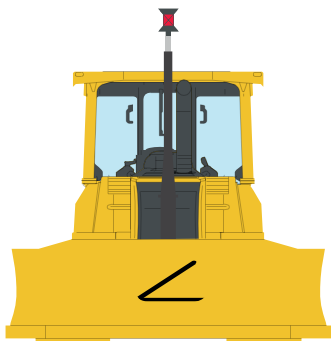


Machine Guidance

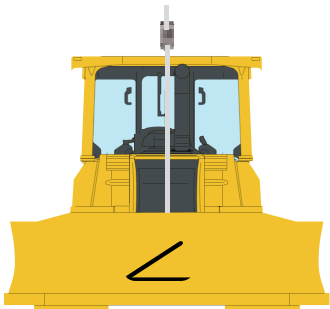
Provide your heavy machinery with precision guidance.

When working under tree lines, or in other scenarios with challenging GNSS connectivity, laser guidance provides a clear advantage. Laser/total station guidance takes you where satellite cannot.



Total Station Control

The robotic total station and prism setup, with Cube Search and Target Snap features, ensures maximum connection, speed, and accuracy all day long without the need for a GNSS.



Rotating Laser Control

Our rotating lasers can connect to any mounted receivers on your machine to calculate precise flat pads and slopes. When total station or GNSS are not an option, our lasers are up to the task.